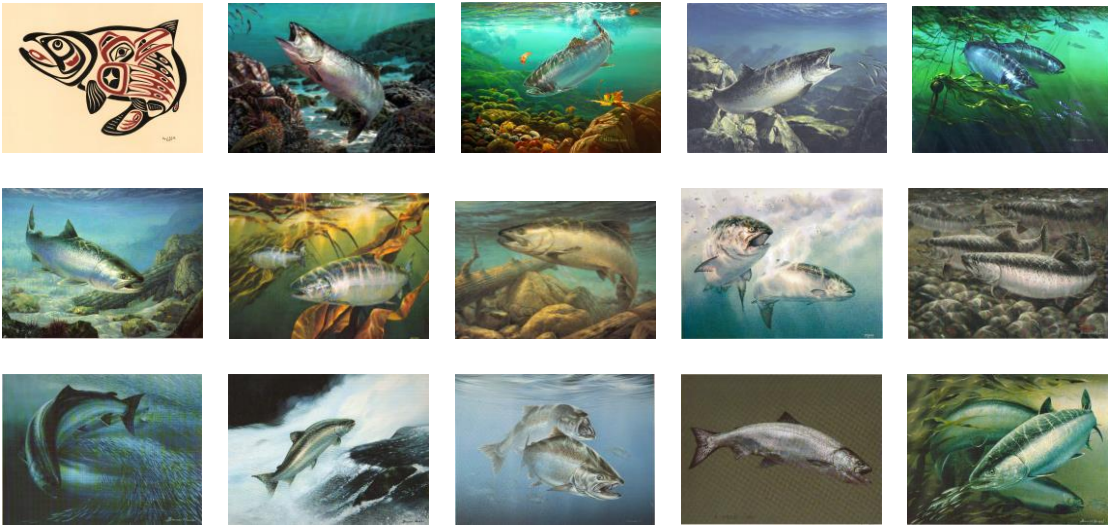




2019/2020  
Salmon Conservation Stamp  
Art Competition



Pacific Salmon Foundation  
300 – 1682 West 7<sup>th</sup> Avenue  
Vancouver, B.C. V6J 4S6  
(604) 664-7664  
[www.psf.ca](http://www.psf.ca)

## **Pacific Salmon Foundation**

Pacific Salmon Foundation (PSF) is the pre-eminent non-profit charitable organization dedicated to conserving and rebuilding Pacific Salmon populations.

Each year Pacific Salmon Foundation works with Fisheries and Oceans Canada to produce the Salmon Conservation Stamp. An angler wishing to retain any species of salmon must purchase and affix a Salmon Conservation Stamp to their Tidal Water License. The purchase of a Salmon Conservation Stamp makes you a key contributor. As of 2013, 100% of the revenue from the sale of these stamps is returned to BC to fund salmon restoration and enhancement projects supported by PSF through its Community Salmon Program.

The Salmon Conservation Stamp image is used as an additional fundraising source for PSF with the production of Limited Edition art prints. These prints are sold through the Foundation and can be viewed on our website: [www.psf.ca](http://www.psf.ca).

## History of the Program

### **Background**

The original stamp agreement between Fisheries and Oceans Canada and Pacific Salmon Foundation was established in 1987. The Salmon Conservation Stamp (originally, Chinook Conservation Stamp) was established in 1989 as part of the 1989/90 – 1990/91 Contribution Agreement with Fisheries and Oceans Canada to develop and manage a “conservation stamp” program in conjunction with the Department’s sport fish licensing program.

The Salmon Conservation Stamp is issued under the Fisheries Act by the Minister of Fisheries and Oceans Canada pursuant to the BC Sport Fishing Regulations as a means of promoting conservation, restoration and enhancement of the salmon resource and salmon habitat.

In past years, PSF received approximately 20% of the income from the salmon conservation stamp with the balance retained by the Federal Government of Canada. However, in 2013 PSF successfully negotiated the full 100% return of the stamp income to BC for salmon restoration and enhancement.

### Salmon Conservation Stamp Details

- Pacific Salmon Foundation annually manages a competition to select an original image to be reproduced as the salmon conservation stamp for the next fishing season.
- A different image will be chosen and attached to the Tidal Water Sport Fishing licenses for each angler choosing to retain a Pacific salmon for that season.
- DFO will be the exclusive client for the stamp throughout the year the stamp is used.
- Pacific Salmon Foundation obtains and retains exclusive rights for the use of the stamp image.
- Remaining unsold stamps shall be returned to PSF at the end of the year.

### **Past Winning Artists**

<b>Year</b>	<b>Artwork Title</b>	<b>Artist</b>
1989	Chinook Salmon	Robert Field
1990	Chinook Salmon	Bruce Muir
1991	Rivermouth Squabble	Curtis Atwater
1992	Stamp River Falls	Bruce Muir
1993	Chinook Salmon	Luke Raffin
1994	Return of the King	James Wiens
1995	Northern Coho	Bruce Muir
1996	In Pursuit	Stephen Wan
1997	Tyee Pool	Bruce Muir
1998	The Chinook Returns	James Wiens
1999	Surf Line Springs	Sam Jackson
2000	Long Live the King	Bill Munsie
2001	Hide and Seek	Sam Jackson
2002	Searching the Shallows	Bill Munsie
2003	Catching the Strays	Mark Hobson
2004	Red Spring	Bill Munsie
2005	Return to Fresh Water	Mark Hobson
2006	High Tide Feed	Bill Munsie
2007	Breaking the Surface	Trevor Tennant
2008	"Sockeye" Pre-spawning Phase	Bill Munsie
2009	The Choice	Luke Raffin
2010	Surface Tension	Mark Hobson
2011	A Moment Of Action	Curtis Atwater
2012	Hunger Strikes	Esther Sample
2013	River Run	Bill Munsie
2014	Rapid Approach	W.Allan Hancock
2015	Salmon Tale	April White
2016	Flash of Silver	Esther Sample
2017	Passing the Torch	Nick Laferriere
2018	Settled In	Donnie Hughes

## **Stamp and Print Competition Rules for Artists**

### **1. Artist Eligibility**

- All artists are eligible to participate by registration on line at [www.psf.ca](http://www.psf.ca) or at the invitation of Pacific Salmon Foundation.
- Members and/or relatives of the competition judging panel, employees of the Federal Department of Fisheries & Oceans, and employees of Pacific Salmon Foundation are ineligible to submit an entry.
- Persons who have won the competition during the preceding year are ineligible to submit an entry for the following two years. They are invited to sit on the judging panel for those two years.

### **2. Subject Matter of Submissions**

- The principal subject must be Pacific Salmon (singular or plural) of any species as listed below, depicted as the focal point:

Chinook, Coho, Sockeye, Chum, Pink, Steelhead and Cutthroat

As this is a Salmon Conservation Stamp and Print, the subject (salmon) must be clearly represented. Although there is no restriction on the degree of realism of the image; the selected species must be painted in accurate proportions and detail. Some styles of salmon art are not visually and anatomically realistic (i.e. North West Native Art.) If this is the case, the image can be rated on the basis of its representational qualities and 'accuracy' in terms of its style type.

### **3. Specifications for Submissions**

- The painting must be **unframed**, with optional white matting. PSF will not arrange frame removal or matting for individual artists. It must be of a horizontal design. Minimum acceptable size is 165.1 mm high by 228.6 mm wide (6.5" high by 9" wide). The maximum permitted size is 495.3 mm high by 685.8 mm wide (19.5" high by 27" wide). Submissions must be properly proportioned to accommodate the following reproduction sizes:
  - a) Limited Edition Print: 165.1 mm by 228.6 mm (6.5" high by 9" wide)
  - b) Conservation Stamp: 30 mm high by 48 mm wide (1.25" high by 2" wide)
- Entries must be multicolored and may be painted in the artist's choice of medium. Digital representations and computer generated artwork do not qualify. All entries must be original paintings. Remember however, that the judges are looking for a painting that will reduce easily to stamp size. Submissions that are too dark or too busy do not translate well to stamp

size as they can lose their clarity and detail when reduced. PSF will reproduce each image to stamp size and the stamps will be on display with the original entry.

- Artists' initials and/or name may appear only on the bottom right corner of the painting for the competition, but the artist hereby agrees that any form of identification will be covered over prior to and during the competition. Each entry will be identified by a number assigned by Pacific Salmon Foundation.
- The winning artist must agree to grant and assign all existing and future rights to the painting to Pacific Salmon Foundation, including, but not limited to, the artist's copyright in the painting.
- PSF may choose to display all previous winners and all new entries in a public display before the competition.

#### **4. Submission Procedure**

- Each artist may submit only one original entry which must be accompanied by an artist's entry form. Each entry should be protectively packaged and dropped off in person, mailed first class or shipped via courier. Pacific Salmon Foundation will return each entry in its original packaging following the competition.
- PSF will not insure paintings except from the day they are received and for seven days after the competition. Artists therefore should obtain adequate property coverage for their paintings. It would be appreciated if the artists could come by the offices of PSF within two weeks of the competition, to collect their paintings. With the exception of the winning painting, all entries not picked up by hand will be returned, (in their original packaging) by priority post, courier or Canada Post (uninsured) within 30 days of the completion of the contest. PSF is not responsible for any brokerage fee charges for delivery to and from the USA.

#### **5. Competition Deadline**

All artwork must be delivered no later than 4:00 pm on Wednesday, October 31<sup>st</sup>, 2018.

Pacific Salmon Foundation  
Attn: Christina McIntyre  
Suite 300-1682 West 7<sup>th</sup> Avenue  
Vancouver, B.C. V6J 4S6  
Phone: (604) 664-7664  
Fax: (604) 664-7665  
Email: [cmcintyre@psf.ca](mailto:cmcintyre@psf.ca)

## **Judging Criteria and Specifications**

A minimum of seven independent individuals will be selected by Pacific Salmon Foundation to serve without compensation as judges.

Entries will be judged on the basis of:

- Representational qualities and habitat accuracy if applicable
- Artistic composition
- Originality
- Technical suitability for reproduction as a conservation stamp and lithograph print

There will be three scoring stages:

### **FIRST STAGE**

Judges will view all entries together and then individually, to determine those that meet the basic requirements of artistic composition, originality and technical suitability for reproduction as a conservation stamp and lithograph print. Those entries deemed suitable will be moved to the second stage. There must be consensus that an entry not be moved to the second stage for it to be eliminated.

### **SECOND STAGE**

Each painting found acceptable in the first stage of judging will be displayed. Judges may discuss aspects of each painting using the following rating criteria and scoring system:

1. Biological Criteria (2 points maximum)
  - Rate the accuracy of species anatomy or in the case of representational art, the quality of the representation
  - Rate the accuracy of the habitat if the image includes habitat

Some styles of salmon art are not visually and anatomically realistic (i.e. North West Native Art.) If this is the case, the image should be rated on the basis of its general representational qualities and 'accuracy' in terms of its style type.

2. Artistic Criteria (4 points maximum)
  - Does the image present a fresh perspective?
  - Rate the use of light, colour and form
  - How well does the painting represent the subject?
  - Is the level of detail appropriate and consistent within the painting?

3. Appeal Criteria (4 points maximum)

- Will the subsequent image appeal to a wide audience for use as a conservation stamp and limited edition print
- Will the painting reproduce to a 6 ½" x 9" print as well as a 2 ¼" x 2" stamp

Each judge will vote scoring each entry from 0 to 10 based on the sum of the three criteria. The highest and the lowest score for each entry will be eliminated and the remaining scores will be totaled to indicate the score for that entry. The entries receiving the four highest scores will then advance to the final round of judging.

**THIRD STAGE**

For the final round, all judges will vote on the four remaining entries using the same 10 point scoring system and criteria used in the previous stage. The winning entry will be the one receiving the highest score. Second and third place will also be chosen on the basis of ranking. In the event of a tie for first place, all judges will vote on the deadlocked entries using one vote per judge for their preference. The winner will be the entry receiving the most votes. The judge's decision will be final.

**NONE SUITABLE**

In the event that the judges, in their collective opinion, do not find an entry suitable for selection, Pacific Salmon Foundation reserves the right to commission an artist of its choice to produce the image.

The remuneration for the winning artist will be \$6,000.00 payable in two installments of \$3,000.00; the first immediately following the competition and the second upon signing the number of limited edition prints and stamps as required by the PSF.

PSF will award the artist who places second in the competition \$600.00, and will award the artist who places third in the competition \$400.00. These two awards will be presented immediately after the competition.